



FLOOD RELIEF APPEAL
 Phone: 1800 219 028
 Online: www.qld.gov.au/floods

frsa.com.au
1300 4 RESCUE

#1 JAN/FEB 2011
Breaking News

FRSA
 Fire Rescue Safety Australia

DeBRIEF

KEEPING YOU UP TO DATE WITH ALL THINGS EMERGENCY RESPONSE.

IN THIS ISSUE:

- 1 FRSA Relaunch**
Anytime Anywhere
- 2 QLD Floods**
- 3 Fast Attack RIV**
E-One TITAN/ARFF
- 4 Rescue Sleds**
WaySafe



The new FRSA Triton



The new FRSA car badging

FRSA launch new brand identity for 2011 and beyond.

New brand, new ethos - It's all about raising the bar!



and external changes to better serve our customers and keep pace with the growth in our quality range of products and services.

FRSA has always been a leader in bringing the latest, most innovative product solutions to market and backing these products with technical knowledge and support.

FRSA is so confident that our world class products will provide solutions that are.....

- 1. Stronger**
- 2. Greener**
- 3. Smarter**

...that we invite you to put us to the test!

"ANYTIME ANYWHERE"

FRSA have launched their new Corporate Identity as the first initiative of an exciting new business overhaul in 2011.

Excitement, Innovation and Reliability are the key concepts behind the new look and FRSA will unveil many more new initiatives throughout the year....stay tuned!

The company is entering a new phase which will see many internal

FRSA's range of products proven in the field to be second to none

There is only one true test of a products' performance and that cannot be tested around a table or on a glossy brochure, it is in the field!

At FRSA we know we have a product range that is second to none and we invite you to test our products in the field, where it really counts

Anytime....Anywhere...Against Anyone!

We are so confident that our product range will prove itself to you that we will let you put it to the test!

If you are not using FRSA products then are you really getting the best value, environmentally friendly or superior performing products that your people "must have" in a life saving emergency?

After all the talking is done, try us before you decide "anytime, anywhere" and be sure you are getting the best.

Field tested....FRSA Assured!

Call 1300 4 RESCUE TODAY!

See website for more details www.frsa.com.au

Fire Rescue Safety Australia

'Supplying Professionals Around the World with the finest Emergency Response Equipment'



FRSA
 Fire Rescue Safety Australia



FRSA
Fire Rescue Safety Australia

#1 JAN/FEB 2011
General News

DeBRIEF

KEEPING YOU UP TO DATE WITH
ALL THINGS EMERGENCY RESPONSE.

QUEENSLAND FLOODS

A first hand account of the devastating floods
by Mick Richards (FRSA Regional Manager Queensland)

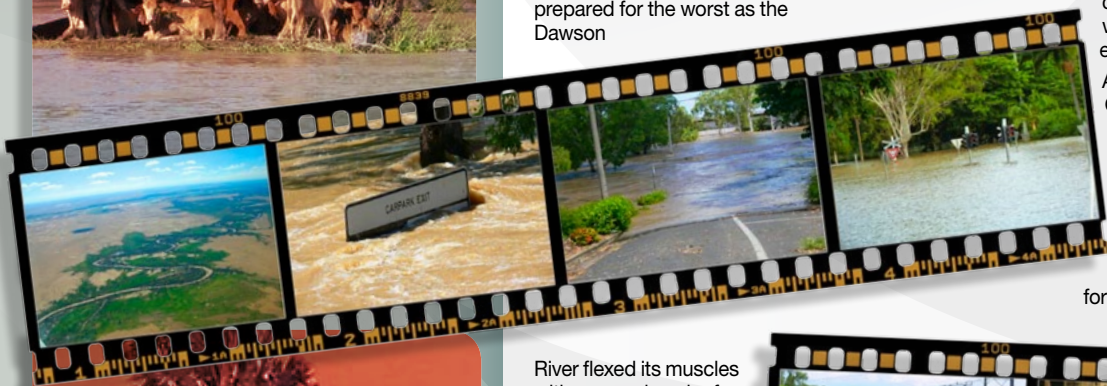


Whilst most of Australia were celebrating the Christmas and New Year period, up to 75% of QLDer's were bracing for some of the worst flooding on record and some of the worst weather mother nature could throw at us.

Starting with the Central West, townships such as Taroom, Theodore, Moura and Baralaba, they prepared for the worst as the Dawson

Badly damaged road, rail and air infrastructure has now paralysed the regions for now up to 3 weeks, and counting... Along with this come the food shortages and the nasties such as mosquito plagues, water contamination, dengue fever, and so on as the water logged areas recede. At the end of all this is the rebuilding of homes, towns, cities and general infrastructure which will continue for weeks, months and even years.

As we write this article, the South East QLD floods are unfolding with a flood peak of 4.6m on the 13th of January, one of highest Brisbane flood peaks in history. Thankfully not as high as the devastating '74 floods. This is the pinnacle of devastation for an already exhausted QLD population, emergency services and defence force. FRSA has been there on the front line over



River flexed its muscles with a record peak of 13.49m in Theodore which saw the entire town evacuated by helicopter. Leading up to New Years Eve, the major Central QLD town of Emerald, located 300km west of Rockhampton braced for one of its worst floods on record. Nagoa River peaked at 16.3m on New Year's Day and seeing up to 80% of the



the past 6-8 weeks with the deployment of Rapid Response Shelters, Swiftwater Rescue Equipment and a myriad of other products to assist local government, SES and Emergency Services with the response to the disasters across QLD and NSW.

We do hope that any of our clients, families and friends that have been directly or indirectly affected by these events, are all safe, and can start to recover any losses they may have experienced. We do ask, if there is anything we can do to help, please do not hesitate to contact us. And remember FRSA's thoughts are with you all.



township affected by some form of water inundation. By New Years Day, the mighty Fitzroy River located in Rockhampton was surging towards one of its highest peaks on record of 9.2m on January 3rd. The Fitzroy Basin drains all of the mentioned regions into the one Fitzroy River which meets the ocean at Port Alma, approx 40km south of Rockhampton. The Fitzroy River Basin is the second largest catchment within Australia after the Murray Darling.

Water inundation for these area's is only the initial problem caused by these acts of nature... It is the knock on effect that will be costly to the QLD locals in months and years to come...



Reaching new heights

FLOOD RELIEF APPEAL
DONATE TODAY!
Phone: 1800 219 028
In Person: Any CBA, NAB, Westpac, ANZ, BOQ or Suncorp Branches
Online: www.qld.gov.au/floods

See website for more details www.frsa.com.au



FRSA
Fire Rescue Safety Australia

#1 JAN/FEB 2011
Industry News

DeBRIEF

KEEPING YOU UP TO DATE WITH ALL THINGS EMERGENCY RESPONSE.

Futures bright for FRSA Rapid Intervention Vehicles (RIV)

Getting more from your frontline response vehicle.

With so many of us still using a traditional fast attack vehicle with limited capacity and capability the direction FRSA has taken with this class of vehicle is quickly gaining momentum.

Imagine for a moment... arriving at an accident scene in your new RIV. It's a dual cab 4x4 platform with ROPS so you have a crew of five on the scene safely within minutes. A vehicle has come off the road and is on fire with occupants inside. There is no time to waste. Your new RIV is set up for a myriad of rapid intervention activities.

Fire Suppression – this model has a Frontline 4500 CAFS system fitted with a foam output of 4500 litres. Within seconds you have foam being applied and the fire is under control.

Vehicle Extrication Equipment – The vehicle is fitted with the latest Genesis battery operated tools giving you rapid access to those trapped inside the vehicle.

Medical Equipment – With critical medical equipment for the paramedic available and easily stored on the RIV, the vehicle occupants are safely extricated from the vehicle. Paramedics have defib, oxygen equipment and trauma kits all at hand to provide immediate patient care.

The backup team arrives at the scene but with the bulk of the work completed a few extra hands



to clean up the scene is always welcomed.

The RIV gives you greater capacity and capability. Without the capability to hold additional essential rescue and medical equipment and have additional resources on board the outcome could have been totally different.

FRSA Rapid Intervention Vehicles can be optioned up to include;

- GPS
- Satellite Communications
- Man-down / personal tracking systems
- Portable lighting Systems
- ProCab Air Systems (provides oxygen to crew in wildfire emergencies)
- Remote Command Centre

Contact your local FRSA representative for more information.



FRSA RIV



The Triton Batteries

Moro Airport PNG takes delivery of the E-One Titan ARFF Fire Appliance

“The purchase of our ARFF Fire Appliance required specialist help when it came to sourcing pumps, fittings and fire fighting equipment”. Mick Richards & Ramsay Wells from the Queensland FRSA team were totally professional in giving me options to overcome problems.

Many companies would have simply given up, but these guys relished on the challenges presented to them which included calls to a number of suppliers interstate and overseas. They even travelled to Townsville to oversee the fitting of my new pump and all the fittings. They are now my number 1 supplier for all emergency service equipment for my PNG Operations.”



Platon Dogeta (ESO), Mike Taylor & Paul Tomelis (ESS), Vincent Turi & Berry Ogla (ESO's)



Mike Taylor – OSL Emergency Services Supervisor, ready to take OSL's E-One Titan to the Port of Townsville ready to ship to Moro Airport PNG





FRSA
Fire Rescue Safety Australia

#1 JAN/FEB 2011
Product News

DeBRIEF

KEEPING YOU UP TO DATE WITH ALL THINGS EMERGENCY RESPONSE.



RS10 Rescue Sled



Airtrack rescue path

Rescue Sleds

RS Series Water Rescue Craft exclusive to FRSA

The RS Series Rescue Sled is a water rescue craft for use in crisis rescues i.e. flood rescue, that occur primarily in rivers, flooded urban and coastal areas, mountains and lakes.

Fully inflatable, the Rescue Sled is lightweight and portable, both inflated and deflated. It is easy to man-oeuvre, and can be paddled, pulled by hand, or towed by a jet ski, boat or small hovercraft.

The Rescue Sled has a flat bottom, making it exceptionally stable and suitable for use in very shallow water (from only 50mm), making it perfect for help in flood rescue. The open, low stern assists with casualty recovery, and enables quick rescue of wheelchair users. Once on the sled, individuals can sit on the floor surrounded by high inflatable sides, offering a comfortable and reassuring rescue craft.

The Rescue Sled is available in four standard sizes; 3, 5, 10 and 15 man. The 3 and 5 man sleds include a removable bolster and are ideal for swift water rescue. The 10 and 15 man sleds have a large floor space and capacity, making them the perfect choice for



emergency evacuation and flood rescue situations. To increase capacity, sleds can be linked together, and larger sizes (up to 45 man) can be manufactured on request.

FRSA can help set up your entire Swift Water Rescue capability. Along with the rescue sleds we have a variety of complementary products such as dry suits, water rescue helmets, neoprene boots, throwlines, technical rescue PFD's to name just a few.

See website for more details www.frsa.com.au

Waysafe

The need to know where we can walk safely and without fear of danger is essential. A clearly marked walkway around a hazard, or a directional marker indicating a pathway from point A to point B is essential in a myriad of industrial and emergency applications.

The portable Waysafe system's cable is only 5mm in diameter. The cable emits a brilliant Blue/Green light along its entire length. This colour is highly visible at night and provides the safety and comfort factors, inherent of a clear constant reference point. Waysafe standard model is available in 50m and 100m lengths and a new economy range is available in 30m and 60m lengths. Waysafe uses a rechargeable battery system that provides up to 50hrs operation on the 30m model.

Optional Extras

Remote Activation - Dimming Facility - Constant and Flashing modes - Removable illumination material - Different illumination colours



Waysafe being used to illuminate pathways

